

JenDental
UKRAINE



COMPOSITE RESTORATIVE SYSTEM

JEN-FAVORITE LC / JEN-RADIANCE / JEN-RADIANCE MOLAR / JEN-RADIANCE FCP / JEN-RADIANCE WA



COMPOSITE RESTORATIVE SYSTEM JENDENTAL

- Nano-hybrid composite *Jen-Favorite LC*
- Universal composite *Jen-Radiance*
- Highly filled composite *Jen-Radiance Molar*
- Flowable composite paints *Jen-Radiance FCP*
- Modeling agent *Jen-Radiance WA*





JEN-FAVORITE LC – MULTIPURPOSE MODERN NANO-HYBRID COMPOSITE RESTORATION MATERIAL

- Cutting edge: I (Incisal).
- Enamel shades: A1-E; A2-E; A3-E; A3,5-E; B1-E; B2-E; C2-E.
- Shades of dentin (the body of the tooth): A1-D; A2-D; A3-D; A3,5-D; A4-D; B1-D; B2-D; C2-D.
- Opaque shades (for disguising the areas with strong discoloration): WOP (White Opaquer), UO (Universal Opaquer), LOP (Light Opaquer).

All shades of the material Jen-Favorite LC are produced in syringes of 4 g.



JEN-RADIANCE – UNIVERSAL COMPOSITE MATERIAL FOR HIGH-AESTHETIC RESTORATIONS

- Transparent shades: IOP; I; OY (Opal Yellow); OBL (Opal Blue); OG (Opal Gray).
- Enamel shades: A1-E; A2-E; A3-E; A3,5-E; A4-E; B0,5-E; B1-E; B2-E; B3-E; C2-E, D2-E, D3-E.
- Opaque (basic) shades: A1-O; A2-O; A3-O; A3,5-O; A4-O; A5-O; B0,5-O; B1-O; B2-O; B3-O; C2-O; C3-O; D2-O; D3-O.
- Super-opaque colors: A1-SO, A2-SO, A3-SO, B2-SO, UO (Universal Opaquer), SWOP (Super White Opaquer), WOP (White Opaquer), OBR (Opaquer Bright).

All shades of the material Jen-Radiance are produced in syringes of 4 g.



JEN-RADIANCE MOLAR IS A HIGHLY FILLED LOW-SHRINK COMPOSITE FOR ALL POSTERIOR RESTORATIONS

- Shade: U (Universal) – available in syringes of 4 g.



JEN-RADIANCE FCP – FLOWABLE COMPOSITE PAINTS FOR COLOR MODELING OF FISSURES AND OTHER CHARACTERISTIC FEATURES OF RESTORED TEETH

- Jen-Radiance FCP (Brown) – for creation of natural color of fissures.
- Jen-Radiance FCP (Ochre) – for color correction of other teeth areas (cracks in young and elderly teeth, tobacco spots, etc.).
- Jen-Radiance FCP (White) – for modeling of other areas of the teeth (areas of hypercalcification, fluorosis, etc.).
- Jen-Radiance FCP (Gray) – for making the cutting edge of the teeth visible and for other special color corrections of the teeth.

All shades of Jen-Radiance FCP are available in 2 ml syringes.



JEN-RADIANCE WA (Wetting Agent) – SPECIAL LIGHT CURED MODELING AGENT FOR WETTING OF MATERIAL SURFACE AND FOR REGULATING OF MATERIAL DENSITY

Jen-Radiance WA – is available in 2 ml syringes.



Jen-Favorite LC is a multipurpose restoration composite with a unique TRIMODAL filler. Nano-hybrid formula provides Jen-Favorite LC with excellent aesthetic properties, perfect polishability and improved manual properties as well as outstanding mechanical and physical characteristics such as X-ray contrast, fracture strength, compressive strength and tensile strength.



JEN-FAVORITE LC

Multipurpose modern nano-hybrid composite restoration material of high aesthetics

PRODUCT BENEFITS:

- Jen-Favorite LC is a combination of well-selected transparent, translucent and opaque materials that guarantees excellent aesthetics of the restorations.
- Jen-Favorite LC allows to successfully carry out restorations both on anterior and posterior teeth.
- The fluorescence spectrum of the material is close to that of protein of natural teeth which allows to make restoration of the highest level taking into account all modern aesthetic requirements.
- The material has an outstanding chameleon effect which allows to disguise it well in the cavity.
- The material has excellent polishability providing restorations with natural aesthetics.
- Jen-Favorite LC has excellent manual qualities, the material is plastic and does not stick to a tool.
- High aesthetic and optical qualities of the material allow to make the restoration according to a classical technique and the technique of layer-by-layer application (the «stratification» method).

COMPOSITE RESTORATIVE SYSTEM JEN-FAVORITE LC

UNIVERSAL NANO-HYBRID COMPOSITE JEN-FAVORITE LC

INDICATIONS FOR USE:

- High-aesthetic restoration of cavities of class I, II, III, IV and V.
- Making of inlays and onlays.
- Sandwich technology.
- Splinting.
- Stump modeling.

IMPROVED MANUAL PROPERTIES:

- When developing the material special attention was paid to the improvement of its manual qualities. Jen-Favorite LC is quite plastic and at the same time holds its shape well even when heated to the temperature of the human body. At the same time the material does not stick to the tool which allows to apply it easily and quickly and adapt it to the cavity.



JEN-FAVORITE LC HAS A WIDE COLOR PALETTE OF 20 SHADES IN 4 OPACITY LEVELS:

- Cutting edge: I (Incisal)
- Enamel shades: A1-E; A2-E; A3-E; A3,5-E; B1-E; B2-E; C2-E
- Shades of dentin (the body of the tooth): A1-D; A2-D; A3-D; A3,5-D; A4-D; B1-D; B2-D; C2-D
- Opaque shades (for disguising the areas with strong discoloration): WOP (White Opaquer), UO (Universal Opaquer), LOP (Light Opaquer).



CLINICAL CASE FROM THE PRACTICE OF Dr. TATIANA LITVIN

Dr. Tatiana Litvin

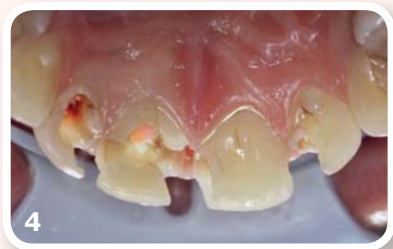
Practicing dentist, professional consultant of JenDental-Ukraine LLC, private practice, Kiev, Ukraine.

Initial situation:

A patient came to the clinic with a complaint of the unsatisfactory condition of the restorations of anterior teeth of the upper jaw. After medical examination it was found out that the teeth 1.2; 1.1; 2.1; 2.2 had photopolymer fillings with changes in color, dislocation of marginal fit and secondary caries.

CLINICAL USE OF MATERIAL JEN-FAVORITE LC

RESTORATION OF THE UPPER JAW



Pic. 1, 2. Initial situation.

Pic. 3, 4. After removal of fillings out of teeth 1.2; 1.1 endodontic retreatment of these teeth was carried out.

Pic. 5. Before the beginning of the restoration impressions of both jaws were taken and a silicone mold was made.

Pic. 6. Then the etching of enamel for 30 seconds and of dentin (15 seconds) with orthophosphoric acid was carried out.

Pic. 7. Applying and rubbing of the adhesive into the tooth surface. Light-curing.



A CONTINUATION >>>

**CLINICAL CASE FROM THE PRACTICE OF
Dr. TATIANA LITVIN**

Dr. Tatiana Litvin

Practicing dentist, professional consultant of JenDental-Ukraine LLC, private practice, Kiev.



Pic. 8. The first step in the restoration of the teeth was the creation of palatal surfaces according to a silicone mold, application of Jen-Favorite LC shade A1-E onto the silicone mold, fitting and adaptation of Jen-Favorite LC onto the palatal surface of the teeth with the help of the brush with modelling resin Jen-Radiance WA and its light-curing for 20 seconds on each tooth.

Pic. 9. After removal of the silicone mold light-curing of the palatal surfaces of these teeth was carried out during 20 seconds for each tooth.

Pic. 10. Then the approximate surfaces were restored with enamel shade of Jen-Favorite and the teeth were restored according to the stratification technique: selected shade +2,5. That is the original tooth color is A1, so the first opaque layer was a shade darker - A3,5-D. This layer was applied closer to the neck of the tooth. After that opaque shades A3-D, A2-D were applied on the tooth body.

CLINICAL USE OF MATERIAL JEN-FAVORITE LC

RESTORATION OF THE UPPER JAW



A1-D opaque was applied onto the areas closer to the cutting edge and onto the mamelons. A1-D opaque was applied with constant condensation of the brush with Jen-Radiance WA for better adhesion of the layers.

Pic. 11. The final modeling of the vestibular surfaces of these teeth was carried out with Jen-Favorite LC A1-E and A2-E enamel shades with use of Jen-Radiance WA modeling resin.

Pic. 12. After that the correction of occlusion in restorations, grinding with Jiffy Polishing and polishing by the brush Jiffy Goat Hair (Ultradent) with Diamond Polish (UD) polishing paste were carried out. The next step was - covering the restorations with Perma-Seal (UD) for improved gloss of restorations.

Pic. 13. The final view of restoration after grinding and polishing.

Pic. 14. The final view of restoration two weeks after all restoration procedures.





Jen-Radiance is a universal microhybrid composite for aesthetic restorations with a unique bimodal filler (the average particle size is 0.4-0.7 μm for the primary filler and 0.02-0.04 μm for the nanofiller, fullness by weight – 79%). The material combines perfect aesthetics and excellent polishability of nanocomposites as well as outstanding physical characteristics of the microhybrid composite.



JEN-RADIANCE

Universal composite for high-aesthetic anterior and posterior restorations

PRODUCT BENEFITS:

- Excellent polishability long, lasting luster.
- Excellent manual qualities - the material is moldable and non-sticky.
- High aesthetic and optical qualities - the material allows to perform restorations both in classical technique and in layer-by-layer technique ("stratification" method).
- High physical characteristics of the material, in particular:
 - bending strength - 115 - 125 MPa;
 - compressive strength - 410 MPa.
- The fluorescence spectrum of the material is close to that of the protein of natural teeth which allows to satisfy all modern requirements for aesthetics.
- The material has a "chameleon" effect due to which it can be disguised in the cavity because of internal reflection and dispersion of light.

COMPOSITE RESTORATIVE SYSTEM JEN-RADIANCE

UNIVERSAL COMPOSITE JEN-RADIANCE



INDICATIONS FOR USE:

- Highly aesthetic restorations of class I-V.
- Inlays, onlays veneering.
- Sandwich-technology.
- Splinting.
- Stump modeling.

METHOD OF USING:

- The cavity is prepared according to a standard procedure. In case of deep carious cavities the liner/base material containing calcium hydroxide (for example Jen-Line LCF) should be used to protect the pulp.



JEN-RADIANCE HAS A WIDE COLOR PALETTE OF

40 SHADES IN 4 OPACITY LEVELS:

- Transparent shades: IOP, I, OY (Opal Yellow), OBL (Opal Blue), OG (Opal Gray);
- Enamel shades: A1-E, A2-E, A3-E, A3.5-E, A4-E, B0.5-E, B1-E, B2-E, B3-E, C2-E, D2-E, D3-E;
- Opaque (basic dentin) shades: A1-O, A2-O, A3-O, A3.5-O, A4-O, A5-O, B0.5-O, B1-O, B2-O, B3-O, C2-O, C3-O, D2-O, D3-O;
- Super-opaque shades: A1-SO, A2-SO, A3-SO, B2-SO, UO (Universal Opaquer), SWOP (Super White Opaquer), WOP (White Opaquer), OBR (Opaquer Bright).



CLINICAL CASE FROM THE PRACTICE OF Dr. TATIANA LITVIN

Initial situation:

The patient came to the clinic with a complaint of the wrong shape of the teeth of upper and lower jaws. Teeth 12; 11; 21; 22; 32; 31; 41; 42 have erasability of irregular shapes due to malocclusion and a bad habit to gnaw sunflower seeds (the habit was in the past).



Pic. 1. The initial situation. Teeth have erasability of irregular shape due to malocclusion and a bad habit.

Pic. 2. Preparation of teeth 12; 11; 21; 22.

Pic. 3. Etching of enamel with orthophosphoric acid Phospho-Jen AS for 30 seconds. Etching of dentin for 15 sec.

Pic. 4. Applying and rubbing a single-component Jen-Unibond adhesive into the tooth surface.

CLINICAL USE OF MATERIAL JEN-RADIANCE

RESTORATION OF THE UPPER & LOWER JAW



Pic. 5. Teeth are restored according to direct restoration technique with Jen-Radiance. Dentin shade A3-O is used in the area of the tooth neck, the whole body of the tooth is restored with dentine shade A2-O and the overlap was made with the enamel shade A1-E.

Pic. 6. Preparation of teeth 32, 31, 41; 42. A cofferdam system was used to isolate the area of treatment.

Pic. 7. After the adhesive preparation (using the etching gel Phospho-Jen AS and the one-component adhesive Jen-Unibond) we perform the modeling of the teeth of the frontal group of the lower jaw according to the same protocol.

Pic. 8. A silicone adapter moistened in the modeling resin Jen-Radiance WA is used for fitting and adaptation.

Pic. 9. Restored teeth of the frontal group of the lower jaw.



A CONTINUATION >>>



Patient's smile:

- **BEFORE:** Initial situation
- **AFTER:** Two weeks after the restoration.

Pic. 10. View of the restored upper jaw teeth after grinding and polishing with polishing paste Diamond Polish (Ultradent).

Pic. 11. View of the restored lower jaw.

Pic. 12. The final view of the restoration (upper and lower jaw) after grinding and polishing with Diamond Polish polishing paste and subsequent coating with sealant PermaSeal to protect the restorations from food dyes and "wet gloss".

CLINICAL USE OF COMPOSITE RESTORATIVE SYSTEM JEN-RADIANCE



CLINICAL CASE IN THE DENTAL PRACTICE OF Dr. VADIM ZAGORODNIY

Dr. Vadim Zagorodniy

Practicing dentist, private practice, Khmel'nitsky, Ukraine.

Initial situation:

Patient M, 19 years old. Loss of tooth 21 as a result of trauma. Implantation is planned. Temporary rehabilitation with the help of an adhesive bridge prosthesis. It is the opportunity to study the aesthetic properties of the material Jen-Radiance when restoring the front teeth. Opal and enamel shades of the material as well as opalescent shades for the cutting edge were used. The construction was made with the help of fiberglass tape Interlig (Angelus).



Jen-Radiance Molar is a light cured radiopaque fluorine-containing composite material for filling cavities of I and II classes. Jen-Radiance Molar has a high degree of transparency as well as a very low shrinkage during the process of polymerization (1.63%). Due to these qualities it is possible to apply the material in layers up to 5 mm thick with minimal polymerization stress.



JEN-RADIANCE MOLAR

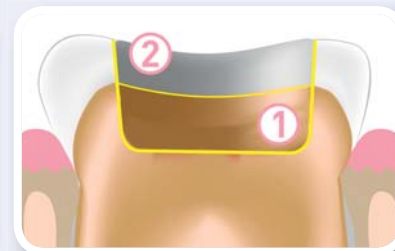
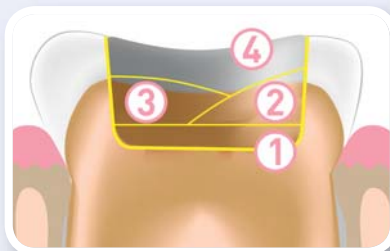
Highly filled low-shrinkage composite for all posterior restorations

PRODUCT BENEFITS:

- High filling of the material (82%) due to a new formula of bimodal filler with the following average size of the particles:
 - the main radiopaque phase - up to 8 microns;
 - nanophase – 10 - 30 nm (nanometers).
- The material is perfectly combined with all types of opaque and enamel composite materials based on methacrylate and designed for aesthetic modeling of enamel surfaces.
- The material has a low polymerization shrinkage (less than 1.63%).
- The material has excellent manual qualities – it is moldable and does not stick to the instrument.
- The coefficient of thermal expansion (CTE) is equal to the one of tooth tissues – $24 \times 10^{-6} \text{ cm/cm}^\circ\text{C}$.
- The material has high physical characteristics:
 - bending strength – 140 MPa;
 - compressive strength – 340 MPa.
- It is available in universal transparent shade U for maximum depth of polymerization.
- Non-cured material has a high resistance to natural and artificial lighting.
- The material is radiopaque and contains fluorine.

COMPOSITE RESTORATIVE SYSTEM JEN-RADIANCE

HIGHLY FILLED COMPOSITE JEN-RADIANCE MOLAR



INDICATIONS FOR USE:

- As a base layer of the composite material replacing the dentin for direct restorations of I and II classes.
- Sandwich technique.
- Stump restoration.

METHOD OF USING:

- Jen-Radiance Molar is applied and polymerized in one portion – up to 5 mm deep.
- Filling the volume of lost dentin with portions up to 5 mm thick (not with layers) significantly reduces the time of restoration.

TRADITIONAL TECHNIQUE:

1. Flowable composite (superadaptive lining).
2. A layer of a universal composite.
3. A layer of a universal composite.
4. A layer of universal composite of enamel shades.

JEN-RADIANCE MOLAR TECHNIQUE:

1. Jen-Radiance Molar (one layer up to 5 mm).
 2. Enamel layer (universal multi-purpose composite at your choice. We recommend Jen-Radiance).
- **ADVANTAGE!** Jen-Radiance Molar is very soft. It is very moldable and adapted well in the cavity filling all the irregularities and undercuts and at the same time it does not stick to the tool.
 - **ATTENTION!** The material Jen-Radiance Molar requires overlapping with a universal composite. We recommend Jen-Radiance.



CLINICAL CASE FROM THE PRACTICE OF Dr. TATIANA LITVIN

Dr. Tatiana Litvin

Practicing dentist, professional consultant of JenDental-Ukraine LLC, private practice, Kiev, Ukraine.

Initial situation:

Patient N. came to the clinic with a complaint of multiple caries of the teeth of the upper and lower jaws. During dental examination carious cavities were found in many teeth of the chewing group, but the patient complained of short-term acute pains while eating in teeth of 36 and 46.

CLINICAL USE OF MATERIAL JEN-RADIANCE MOLAR

CARIOUS CAVITY OF CLASS II BY BLACK. TOOTH 36



1. Carious cavity of class II by Black, tooth 36.
2. Disclosure of carious cavity. Due to the deep location of the cavity partially pigmented dense dentin is left on the bottom.
3. Treatment of enamel (30 sec.) and of dentine (15 sec.) with orthophosphoric acid Phospho-Jen AS and subsequent application of the adhesive system Jen-Unibond.
4. To avoid the complications of caries a calcium-containing liner Jen-Line LCF is applied on the bottom of the cavity.
5. The bottom and the entire cavity of the tooth are filled with highly filled composite Jen-Radiance Molar up to the level where the dentin transfers to the tooth enamel.
6. The overlap of the tooth cavity is made with the opaque layer of the universal composite material Jen-Radiance of shade A3-O. Modeling of dental mounds.
7. The final stage of restoration was carried out with the enamel shade A1-E, followed by polishing and grinding with elastic bands and brushes Jiffy (Ultradent).



A CONTINUATION >>>



CLINICAL CASE FROM THE PRACTICE OF Dr. TATIANA LITVIN

Dr. Tatiana Litvin

Practicing dentist, professional consultant of JenDental-Ukraine LLC, private practice, Kiev.

8. Carious cavity of class II by Black, tooth 46.
9. Disclosure of the carious cavity, which is located at the level of the cover pigmented dense dentin.
10. Treatment of enamel (30 sec.) and of dentine (15 sec.) with Phospho-Jen AS orthophosphoric acid followed by washing with water for 1 minute.
11. Application of the adhesive system Jen-Unibond and rubbing it onto the surface of the enamel and dentin in accordance with the manufacturer's instructions.
12. Applying the liquid photopolymer material Jen LC-Flow of shade A2 onto the bottom of the cavity and at the junction to improve the marginal fit of the future seal. 6. The bottom and the entire cavity of the tooth are filled with Jen-Radiance Molar – two layers of 3 mm to impart plasticity to the future restoration and prevent the shrinkage of the filling material.

CLINICAL USE OF MATERIAL JEN-RADIANCE MOLAR

CARIOUS CAVITY OF CLASS II BY BLACK. TOOTH 46



13. The final stage of the restoration was carried out with an enamel shade A1-E with the help of ironing and restorative brushes soaked in Jen-Radiance WA resin to improve the fit and easier modeling of dental mounds.

14. The final view of the restoration of the tooth 46 after grinding with Jiffy Rollickie and with a brush Jiffy Goat Hair (Ultradent).





Jen-Radiance WA is a 30% filled universal radiopaque light-cured composite modeling agent that improves the adaptation of composite materials to hard tooth tissues and prevents the composite from sticking to instruments. Jen-Radiance WA can be used with any composite micro-hybrid restoration material.



JEN-RADIANCE WA

Wetting agent for composite materials

PRODUCT BENEFITS:

- Improves the adaptation of composite material to hard tooth tissues.
- Adjusts the density of the material. Allows you to work comfortably even with hard-to-model composites.
- Can be applied for all classes of restorations.
- Facilitates the application of composites and accelerates the modeling.
- Ensures no adhesion to tools.
- Very convenient and practical use in a syringe.

INDICATIONS FOR USE:

- Composite moisturizing material Jen-Radiance WA is used during the application of composite layers – in case if the composite becomes too dry during layer-by-layer application and / or has been removed (in contact with liquid) or destroyed (wiped) by the oxygen-inhibited layer.
- Jen-Radiance WA helps to improve the slip of the instrument during sculpting and contouring procedures.

CLINICAL USE OF THE SYSTEM JEN-RADIANCE

COMPLEX IMPROVEMENT OF AESTHETICS AND FUNCTIONALITY



CLINICAL CASE FROM THE PRACTICE OF Dr. YEKATERINA OKHOTSKAYA

Dr. Yekaterina Okhotskaya

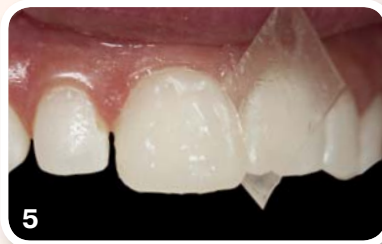
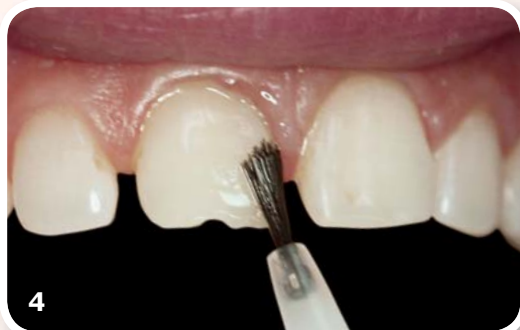
Practicing dentist, private practice, Kiev, Ukraine.

Initial situation:

Irina, 28, came with the complaints of the large gaps between the teeth, food stuck, cutting edge defects in the 11th and 41st teeth due to the harmful habit of gnawing sunflower seeds.

Purpose: to improve aesthetics and functionality.

A CONTINUATION >>>



**CLINICAL CASE FROM THE PRACTICE OF
Dr. YEKATERINA OKHOTSKAYA.**

Dr. Yekaterina Okhotskaya

Practicing dentist, private practice, Kiev.

1. Initial situation: teeth have tremors and diastema on the upper and lower jaws.
2. Minimally invasive preparation of the 21st tooth.
3. For conditioning the surface of the tooth, 37% phosphoric acid Phospho-Jen AS is applied.
4. Application and distribution of Jen-Unibond adhesive with a brush. Active rubbing of the adhesive into the tooth tissue.
5. Application of Jen-Radiance B0.5-O and B0.5-E on the vestibular surface and modeling of anatomical structures.
6. View of a modeled tooth on the background of other teeth.
7. Restoration of 11th and 21st teeth without finish polishing.
8. Restoration of 11, 12, 21-d teeth.
9. Final polishing of four upper central incisors.

CLINICAL USE OF THE SYSTEM JEN-RADIANCE

COMPLEX IMPROVEMENT OF AESTHETICS AND FUNCTIONALITY



10. Preliminary preparation of 31, 32, 33, 41 and 42 teeth (left view).

11. Restoration of the medial-approximal wall of the 33rd tooth with the help of the composite Jen-Radiance B0.5-E (left).

12. The view of finished restorations after finishing polishing and grinding.



Jen-Radiance FCP – flowing composite paints combining a high degree of aesthetics and ease of use.



JEN-RADIANCE FCP

Flowable composite paints

PRODUCT BENEFITS:

- Provides perfect individual restorations of high aesthetics.
- Convenient application and practical use.
- High coating ability.
- Convenient consistency.
- Available in four shades.

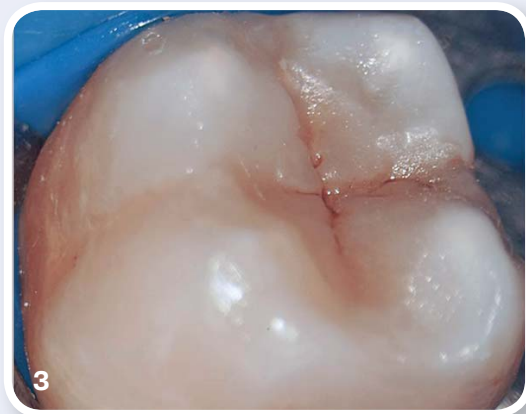
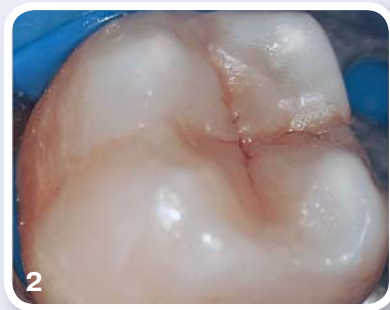
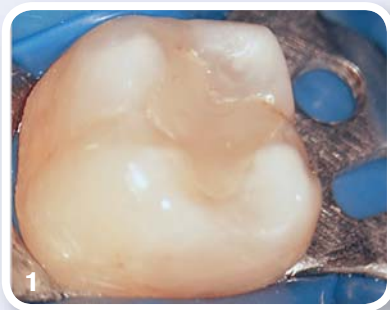
INDICATIONS FOR USE:

- Direct and indirect restorations for the individualization of the restored teeth.
- A masking agent for closing the discolored tooth.

SHADES OF COMPOSITE PAINTS:

- Brown – to recreate the natural fissure color.
- Ochre – for color correction of some areas of the teeth (cracks in young and elderly teeth, tobacco spots, etc.).
- White – to simulate the characteristic features of the teeth (hypercalcification, fluorosis, etc.).
- Gray (Gray Blue) – for characterizing the cutting edge (blue glow of a young enamel, underlining transparent shades).

CLINICAL USE OF PAINT JEN-RADIANCE FCP (BROWN) FOR CREATION OF NATURAL COLOR OF FISSURES



CLINICAL CASE FROM THE PRACTICE OF Dr. ANDREY SAPELYUK

Dr. Andrey Sapelyuk

Specialization: therapeutic dentistry, endodontist-microscopist

Work experience: 18 years. Private dental practice ORIS, Ivano-Frankivsk, Ukraine.

1. Filled cavity of class II by Black.

2-3. Using Jen-Radiance FCP (Brown) paint to simulate the fissures of natural teeth.

12-SYRINGES



▼ Name of the kit	▼ Shades in the kit	▼ Quantity of material in the kit
JEN-RADIANCE JR+M, 12x EFF Kit	Jen-Radiance – A2-E x 2 syr, A2-O x 2 syr, A3-E x 2 syr, A3-O x 2 syr, UO, I Jen-Radiance Molar U (Universal) - 2 syr.	12 syringes of 4 g. / Total - 48 g.
JEN-RADIANCE JR+M, 12x OPTI Kit	Jen-Radiance – A2-E x 2 syr, A3-O x 2 syr, A2-O, A3-E, A3.5-O, B1-E, B2-E, B2-O, UO, I (Incisal) / Jen-Radiance Molar U (Universal)	12 syringes of 4 g. / Total - 48 g.
JEN-RADIANCE JR, 12x EST Kit	Jen-Radiance – A1-E, A2-E, A2-O, A3-O, A3-E, A3.5-O, B2-O, B2-E, B1-E, UO, I, SWOP (Super White Opaquer)	12 syringes of 4 g. / Total - 48 g.

7-SYRINGES



▼ Name of the kit	▼ Shades in the kit	▼ Quantity of material in the kit
JEN-RADIANCE JR Combi Kit, 7x Kit	Jen-Radiance – A2-E, A3-E, A2-O, A3-O / Jen-Radiance Molar U (Universal) Jen LC-Flow – A2, A3 (syringes of 3 g) / Jen-Unibond (bottle of 6 g) Phospho-Jen AS (syringe of 5 ml)	5 syringes of 4 g. + 2 syringes of 3 g. Total - 26 g. + adhesive and etching gel

6-SYRINGES



▼ Name of the kit	▼ Shades in the kit	▼ Quantity of material in the kit
JEN-RADIANCE JR+M, 6x Kit #3	Jen-Radiance – A2-E, A2-O, UO, A3-E, A3-O, Jen-Radiance Molar U (Universal)	6 syringes of 4 g. / Total - 24 g.
JEN-RADIANCE JR, 6x Kit #4	Jen-Radiance – A2-E, A2-O, UO, A3-E, A3-O, I (Incisal)	6 syringes of 4 g. / Total - 24 g.
JEN-RADIANCE JR+M, 6x Kit #5	Jen-Radiance – A1-E, A1-O, A2-E, A2-O, UO, Jen-Radiance Molar U (Universal)	6 syringes of 4 g. / Total - 24 g.
JEN-RADIANCE JR Bleach Kit, 6x Kit #7	Jen-Radiance – A1-O, B0.5-E, B1-E, B1-O, WOP, SWOP	6 syringes of 4 g. / Total - 24 g.

4-SYRINGES



▼ Name of the kit	▼ Shades in the kit	▼ Quantity of material in the kit
JEN-RADIANCE JR, 4x Kit #1	Jen-Radiance – A2-E, A2-O, A3-O, A3-E	4 syringes of 4 g. / Total - 16 g.
JEN-RADIANCE JR+M, 4x Kit #2	Jen-Radiance – A2-E, A3-O, UO, Jen-Radiance Molar U (Universal)	4 syringes of 4 g. / Total - 16 g.
JEN-RADIANCE JR+M, 4x Kit #6	Jen-Radiance – A1-E, A1-O, UO, Jen-Radiance Molar U (Universal)	4 syringes of 4 g. / Total - 16 g.
JEN-RADIANCE JR A2 Full Optical, 4x Kit #8	Jen-Radiance – A2-E, A2-O, A2-SO, I (Incisal)	4 syringes of 4 g. / Total - 16 g.
JEN-RADIANCE JR A3 Full Optical, 4x Kit #9	Jen-Radiance – A3-E, A3-O, A3-SO, I (Incisal)	4 syringes of 4 g. / Total - 16 g.



JENDENTAL-UKRAINE – SCIENTIFIC SEARCH AND INTRODUCTION OF INNOVATIONS!

Address:
Boryspilska Str. 9, Building 61
Kiev 02099, Ukraine

Phone: +380 44 337 8782 / +380 44 228 1866
 +380 50 537 9093
 a_snitko

info@jendental-ukraine.com
www.jendental-ukraine.com